

FINDING AND SHARING SUSTAINABLE PRACTICE SPACE

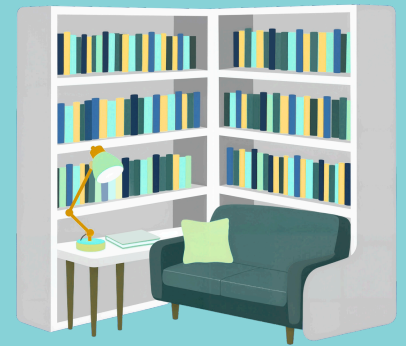
SPACE & PRACTICE CONSIDERATIONS

- **Consider collaborating with other providers** (chiropractors, birth workers, lactation professionals) to share space.
- **Ask around** to understand your needs: price point, square footage, and sustainability.
- **Be clear on your budget** and stick to your price limits.
- **Explore a collective model** where multiple providers share space for their services and clientele.
- **Bartering services** can be a way to access discounted or free space.



ALTERNATIVE & FLEXIBLE SPACE OPTIONS

- **Libraries** offer free rooms for classes and meetings (though not always suitable for client care).
- **Nonprofit hubs** often provide rentable or communal space.
- **Local health departments, WIC agencies, hospitals, Early On programs, and pediatric offices** may offer space.
- **Community-based organizations** like Boys & Girls Clubs, community centers, and hubs are often low-cost or free.
- **Therapy offices** (PT, OT, speech) may have available space.



FUNDING & STRATEGIES

- **Crowdsourced loan**
- **Subleasing** to other practitioners
- Winning **pitch competitions**
- **Microloans** and bootstrapping



PRACTICE MODELS

- **Pop-up model:** bringing services directly into communities (shelters, partner organizations, therapy offices).
- Home visits as a flexible alternative.
- **Hybrid models** (home visits + shared or borrowed space).
- Many providers are **outgrowing current spaces and seeking sustainable, long-term solutions.**

NOTE:
FREE SPACES (SUCH AS CHURCHES) CAN BE HELPFUL BUT MAY UNINTENTIONALLY SIGNAL WHO IS OR ISN'T CENTERED.