

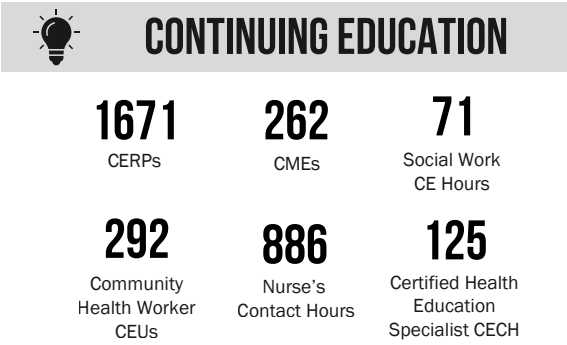
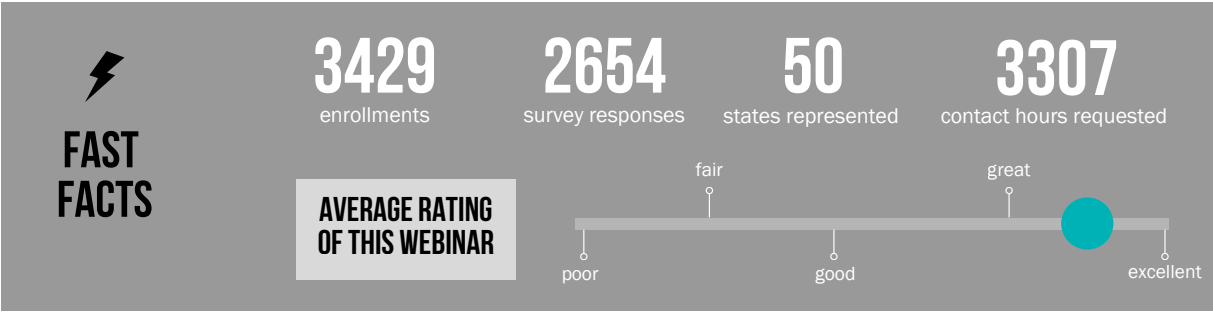


GREAT LAKES BREASTFEEDING WEBINAR

April 2025 Webinar Report

BIRTH INTERVENTION BIAS AND BREASTFEEDING BY TANIAH INGRAM, CBD, CBE, CBS

Available April 15, 2025 through April 15, 2026



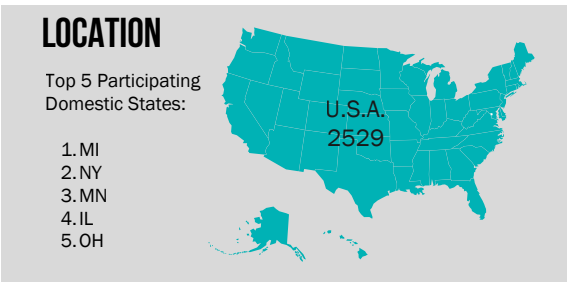
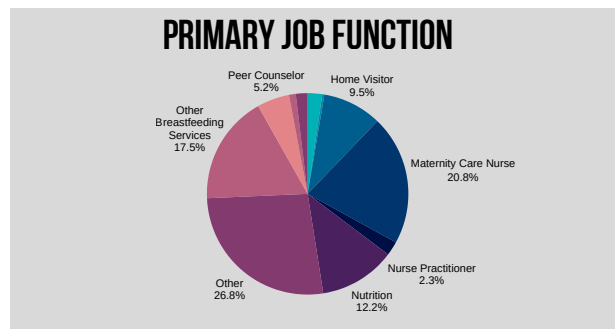
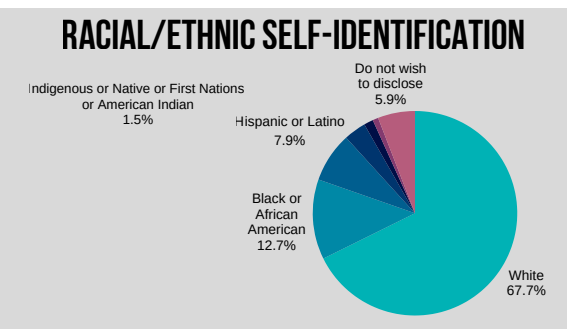
WHAT PEOPLE ARE SAYING

"One thing I think I learned from the webinar is how implicit bias during labor and delivery can directly shape breastfeeding initiation and continuation, even when clinical guidelines are the same."

"Prenatal, labor/delivery, and postpartum care are significantly impacted based on race and social economic status and that impacts one's ability to have support on their breastfeeding journey. KEEP UP THE FANTASTIC WORK!"

"This webinar reinforced the importance of acknowledging biases in regarding to breastfeeding and how we can help change the narrative of biases especially with marginalized groups."

PARTICIPANTS



AS WELL AS	
Canada 38	Malaysia
Hong Kong 3	Mexico
Netherlands 3	New Zealand
Ireland 21	Romania
Italy 3	Singapore
UK 9	South Africa
Australia 16	Sweden
South Africa 2	UAE
Germany 6	

Data in this report includes all participants over the duration of the webinar's availability. Learn more at mibreastfeeding.org/webinars.