



**MICHIGAN BREASTFEEDING
NETWORK**

2022 ANNUAL REPORT

TABLE OF CONTENTS

03. Introduction

07. People Who Are Growing The Movement

10. Spotlight On Our Mission-Driven Efforts

31. Financials

34. The Work Continues

INTRODUCTION

LETTER FROM BOARD OF DIRECTORS' CHAIR

Dear Breastfeeding Supporters,

I'm so proud that MIBFN has put so much focus in the last year on our many advocacy priorities, and growing the base of grassroots supporters who influence policy. I am also so proud of the meeting we convened, in partnership with Southeast Michigan IBCLCs of Color, Panoramic Doula, YOLO, and Postpartum Healing Lodge, with breastfeeding supporters around Michigan to mobilize around strategies for equitable compensation and employment in our field. These advocacy efforts continue to be critical as we continue to move forward through the COVID-19 pandemic, formula shortages, and water contamination crises that have become a constant battle for many families. **With these continued challenges we have needed to continue to shift and advocate for continuous systemic changes to support our families throughout Michigan.**

Looking back to the past few years that I have been working on the MIBFN board, I continue to be filled with energy and hope. **As a network, we continue to focus on the needs and vision of the families, birth workers, and breastfeeding supporters to disrupt and rebuild the systems that have proven time and time again to not work for any of us.** As my term winds down with the MIBFN Board of Directors, I look forward to continuing to support and work alongside the amazing staff and board of the network as well as lactation and birth workers around the state to continue systemic changes for our communities. Thank you for all you do.

In solidarity,

Natosha

Natosha Sage-EL Bylsma, BA, IBCLC, CPST
MIBFN Board Chair
Co-Owner, IBCLC, Next Generation Lactation Service
Co-Executive Director, Next Generation Family Services
Prenatal Instructor & Child Passenger Safety Technician,
Expectant Parents Organization
IBCLC Facilitator, Capital Area Baby Cafe



EXECUTIVE DIRECTOR'S MESSAGE

Dear Breastfeeding Supporter,

As you look through the pages of this report, I hope that it reads like a hug, a high five, and an energy boost to keep going. In MIBFN's 10th year as a formally organized non-profit, the movement for breastfeeding justice and equity is strengthening throughout Michigan and our collective efforts are driving systemic change.

This is a movement to change the systems that harm us all, centered on the most marginalized families who these systems are designed to harm. It is not and cannot be a one-person or one-organization's show. The only way we'll realize the vision we imagine, of justice, liberation, and systemic support for breastfeeding families, is if we move together.

The only way we'll realize the vision we imagine, of justice, liberation, and systemic support for breastfeeding families, is if we move together.

As our movement grows and solidifies, one thing that stays in the forefront of my mind is our core value of "accountability." We are all accountable to each other as individuals, and we are accountable to the broader breastfeeding-supportive movement we are building. Everyone is necessary, everyone is needed, everyone is doing what they can.

I am simultaneously so proud and so honored to serve alongside you. Thanks for all you do, and for continuing to drive these changes forward.

Onward in solidarity,

Shannon

Shannon McKenney Shubert, MPH, CLC
Executive Director, Michigan Breastfeeding Network
Advocacy Teams Lead, Michigan Breastfeeding Network
Chair Emeritus, Wayne County Breastfeeding Coalition
Local Breastfeeding Supporter in Dearborn, Michigan



IN LOVING MEMORY OF STAN BIEN

Our hearts are heavy as we share the passing of MIBFN Board Member Stan Bien. Stan was an incredible champion for breastfeeding and for so many of us individually. During and even after his time as State of Michigan WIC Director, he leveraged his privilege and used his voice to bring breastfeeding to so many spaces and to ensure it was at the front of people's minds all the time. He was so excited to join the MIBFN Board of Directors in 2019 and keep his breastfeeding advocacy going, even in retirement. He was so dedicated to this movement and to families in Michigan. He will be deeply missed.

In lieu of flowers, Stan's family graciously chose for memorial donations to be made to MIBFN. We are so honored that his family chose MIBFN as the recipient of donations in his memory and we are deeply committed to stewarding these funds in a way that honors his legacy.



PEOPLE WHO ARE

GROWING

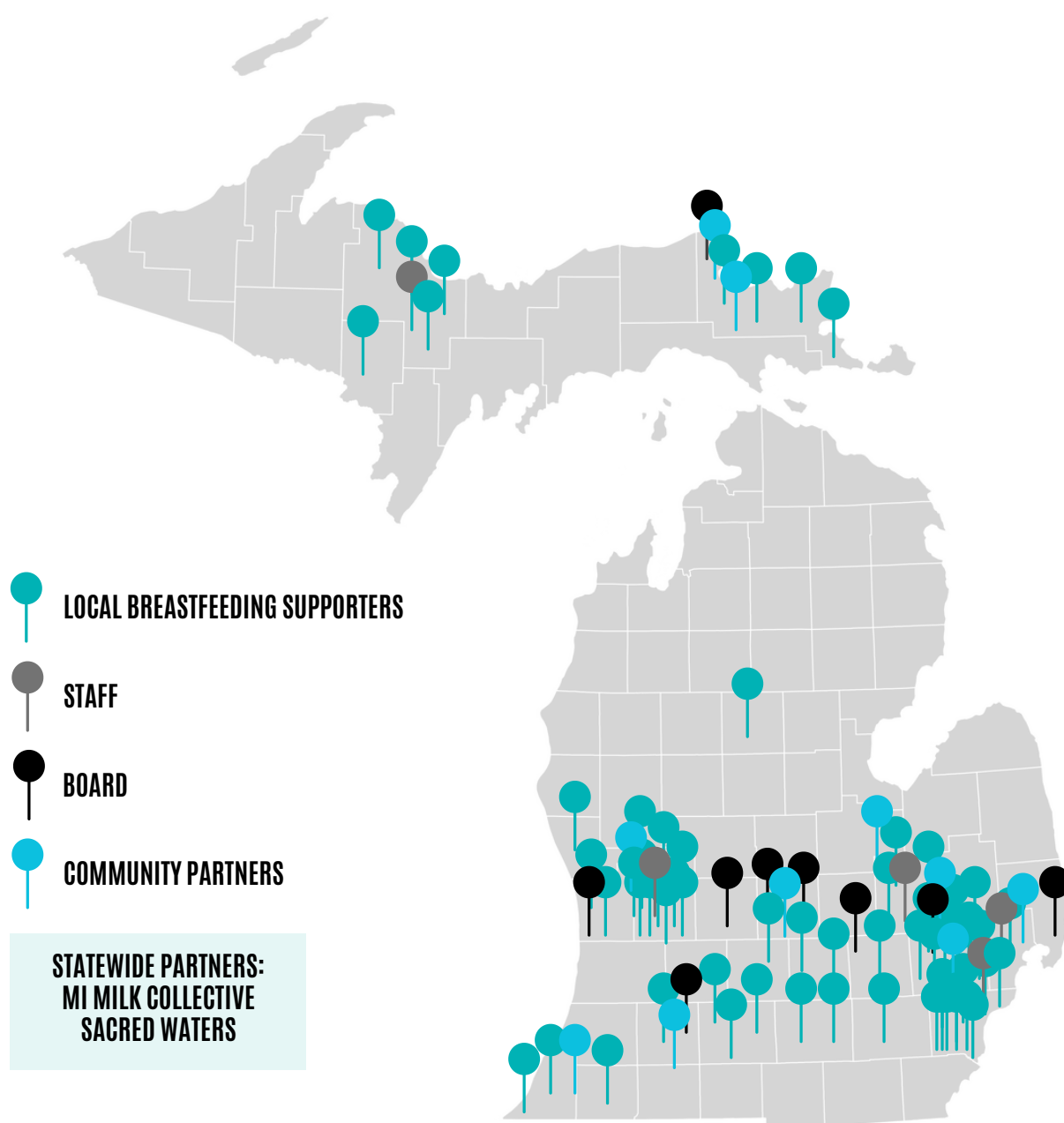
THE MOVEMENT

**"THE LOCAL BREASTFEEDING
SUPPORTER MEETINGS HAVE BEEN A
SPACE FOR COMMUNITY; A
COMMUNITY WHERE WE CAN TAKE
CARE OF EACH OTHER. EACH OF US
GIVES AND GIVES AND GIVES OF
OURSELVES AND WE HOLD ALL OF
THOSE PEOPLE BUT WE NEVER REALLY
HAVE ANYONE TO HOLD US AND THIS
SPACE WAS A PLACE WHERE WE
COULD HOLD EACH OTHER. "**

BIANCA NASH-MIOT, IBCLC, CLC, BD, CPST, FOUNDER, BIRTH
QUEENS AND MILK QUEENS AND LOCAL
BREASTFEEDING SUPPORTER IN COVERT, MICHIGAN

THE PEOPLE WHO ARE GROWING THE MOVEMENT

Our movement towards a just, equitable, and breastfeeding-supportive culture would not be possible without the people who are growing the movement. MIBFN partners, board members, staff, and local breastfeeding supporters are breaking down barriers in the pursuit of systemic change to support human milk feeding across Michigan and beyond.



SPOTLIGHT ON OUR

MISSION-DRIVEN

EFFORTS

ADVOCACY

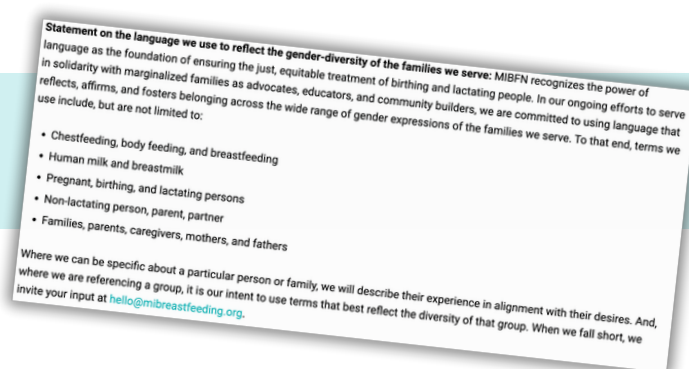
Through our advocacy efforts this year, we focused on cultivating relationships with legislators to advocate for breastfeeding-supportive policies in Michigan and also mobilizing local breastfeeding supporters to engage in advocacy efforts by contacting their legislators to pass breastfeeding-supportive legislation. As a breastfeeding advocacy organization, we rely heavily on our policy priorities to focus our advocacy efforts as we work towards a breastfeeding-supportive culture.

ESTABLISHED THE 2022-2023 MIBFN POLICY PRIORITIES



ADDED A NEW “WATER PROTECTION” CAMPAIGN

EDITED EVERY CAMPAIGN TO HAVE MORE INCLUSIVE LANGUAGE



	CURRENT FEDERAL LAW	PROPOSED FEDERAL LAW	PROPOSED STATE LAW
SCOPE	Includes only workers who are eligible for certain federal anti-discrimination laws (e.g., Title VII, ADA, ADEA, AFOIA, etc.)	Includes all workers who are employed in the United States and who are not covered by any other federal law that provides a similar or more protective standard of protection.	Includes all workers who are employed in the United States and who are not covered by any other federal law that provides a similar or more protective standard of protection.
COVERAGE	Does not address	Does not address	Does not address
PROTECTION	Does not address	Does not address	Does not address
ENFORCEMENT	Does not address	Does not address	Does not address

CREATED AND DISSEMINATED A STATE AND FEDERAL LEGISLATION RESOURCE TO SUPPORT BREASTFEEDING ADVOCATES WITH UNDERSTANDING THE DIFFERENCES AND INTERSECTIONS AMONG ALL THE CURRENTLY PROPOSED LEGISLATION

SECURED AND HELD MEETINGS WITH STATE AND FEDERAL LEGISLATORS

MEETING GOALS:



Educating them on the importance of breastfeeding



Requesting continued support of breastfeeding-supportive federal programs, specifically WIC and Title V



Educating them about the importance of the PUMP Act (federal) and the Breastfeeding Privacy Act (state)



Requesting increased financial support for community-based, equity centered breastfeeding support programs through the state and federal budgets

SUPPORTED FEDERAL EFFORTS IN ADVOCATING FOR THE **PASSAGE OF THE PREGNANT WORKERS FAIRNESS ACT AND THE PUMP FOR NURSING MOTHERS ACT**

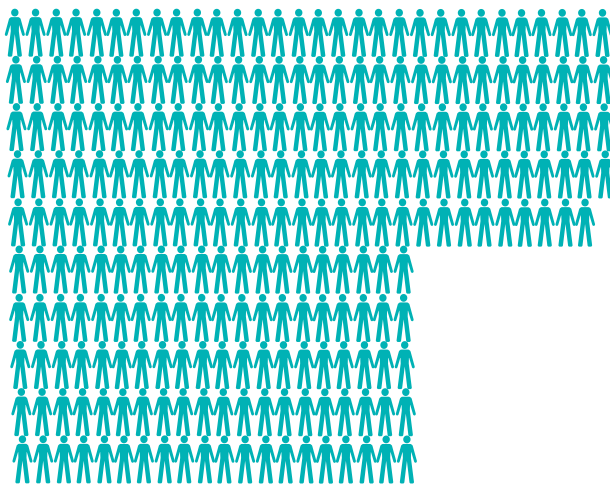
The Pregnant Workers Fairness Act AND the PUMP for Nursing Mothers Act were signed into law by President Biden as part of the 2023 Omnibus Appropriations Bill.

Expanding rights for human milk feeding workers is a win for everyone - children, parents, communities, industry, and our planet. We have fought hard for these crucial pieces of legislation, and we know many of you have, too. Both are essential steps forward in the movement for breastfeeding equity and justice. Your calls, tweets, emails, posts, and visits with legislators are seen, valued, necessary, and immensely appreciated.

Our movement is strong and continues to grow.
We are celebrating and hope you are, too!!

CONVENED MIBFN & LOCAL BREASTFEEDING SUPPORTER MEETINGS, BREASTFEEDING AND EMERGENCIES WORKING GROUP, AND BREASTFEEDING AND MENTAL HEALTH WORKING GROUP

In addition to the meetings and working groups, we also amplified and advocated for evidence-based human milk systems change and mobilizing local breastfeeding supporters in their own communities.



249

participants

21

counties represented

**"I COULD BE HERE TO LISTEN AND TO LEARN
AND TO BE INSPIRED AND CONNECTED TO
EVERYBODY. YOU ARE MY VILLAGE AND I'M
GRATEFUL TO HAVE HAD THIS SPACE."**

Lauren Cody, RD, IBCLC, Breastfeeding Coordinator, Macomb
County Health Department WIC Program, chair, Macomb County
Breastfeeding Coalition, Breastfeeding Mama and Local
Breastfeeding Supporter in Macomb, Michigan

PLANNED **BREASTFEEDING MONTH CELEBRATIONS**, INCLUDING A T-SHIRT FUNDRAISER AND MIBFN'S FIRST VIRTUAL 5K

In honor of 2022 August Breastfeeding Month, MIBFN's theme was "We Rise. We Resist. We Represent." In August 2022, we celebrated lactation supporters and everything they give to the field of lactation - their efforts to find people-centered solutions in their local communities, support families to meet their lactation goals, and charge forward for systemic change.

38

units sold in t-shirt fundraiser

46

folx registered for 5K

In addition to sharing a local proclamation draft and continuing to support communities across Michigan with local proclamation, we worked with community partners and Governor Whitmer's team to get August 2022 proclaimed as Breastfeeding Month and August 8-14, 2022 proclaimed as Indigenous Milk Medicine Week in Michigan.



AMPLIFIED EVENTS HELD BY MICHIGAN WIC AND LOCAL BREASTFEEDING SUPPORTERS VIA MIBFN WEBSITE AND SOCIAL MEDIA PLATFORMS

LAUNCHED A **"MY MILK, MY RIGHT TO SHARE IT"** CAMPAIGN IN LIGHT OF THE ONGOING FORMULA CRISIS





ESTABLISHED AND RELEASED COVID-19 AND BREASTFEEDING GUIDANCE AND SOCIAL MARKETING CAMPAIGN, INCLUDING 21 UNIQUE POSTS OVER 3 SOCIAL MEDIA CHANNELS

We also updated and published Breastfeeding and Lead guidance and social marketing campaign for Benton Harbor, Flint, and Detroit families and public health/health care providers in light of ongoing lead crises as well as Breastfeeding and Formula Crisis guidance and social marketing campaign in light of the ongoing formula crisis.

PUBLISHED OCTOBER 2022 GREAT LAKES BREASTFEEDING WEBINAR, “FEED THE BABY: LACTATION, CONTAMINATION, AND THE AMERICAN FORMULA CRISIS” PRESENTED BY TAMEKA L. JACKSON-DYER, BASC, IBCLC, CHW



PUBLISHED THE FY 2022 MIBFN AND LOCAL BREASTFEEDING SUPPORTER FUND REPORT

LEARN MORE ABOUT OUR ADVOCACY EFFORTS AT [MIBREASTFEEDING.ORG/ADVOCACY](https://mibreastfeeding.org/advocacy).

EDUCATION

Our education efforts are grounded in the core values of equity, access, relevance, and evidence. In addition to growing the Great Lakes Breastfeeding Webinars, we formed a new education contractual partnership with YOLO Lactation and Doula Services, including expansion of our educational offerings to collaborate with YOLO on TrapChat and the 45-hour Community Breastfeeding Supporter Course.

GREAT LAKES BREASTFEEDING WEBINARS



15916

continuing education
certificates requested



3718

unique webinar
participants

Highlights include:

- Providing **free, monthly, on-demand continuing education** for health professionals looking to continue their credentialing without the barrier of cost
- **Centering Black and Indigenous presenters** with a goal of amplifying Black and Indigenous voices and increasing the number of BIPOC lactation supporters in local communities
- Ensuring **topics are timely and relevant**, such as 2022 topics on human milk and mental health, immunizations, incarceration, and the formula crisis



"I DISCOVERED THESE WEBINARS RECENTLY AND I ABSOLUTELY LOVE THEM. I APPRECIATE EVERYTHING ABOUT IT: THE VARIETY OF TOPICS, KNOWLEDGE OF THE PRESENTERS, DURATION, PACE, THE EASE OF THE PRESENTATION THAT ALLOWS ME TO ENJOY IT. I ALREADY RECOMMENDED IT TO MY CLC COLLEAGUES."

WEBINAR PARTICIPANT FROM MISSOURI

2022 GREAT LAKES BREASTFEEDING WEBINARS

Air Date	Title	Presenter(s)
February 15, 2022	Human Lactation and Mental Health: Best Practices	Tameka Jackson-Dyer, BASc, IBCLC, CHW, Rosa Gardiner, RN, IBCLC, Mistel de Varona, IBCLC, and Kara Smith, BSN, RN, CLC, PMH-C
March 15, 2022	Geographies of Breastfeeding: How The Noon Project Helps Reclaim Breastfeeding in Indigenous Communities	Angie Sanchez, MBA, IBC
April 19, 2022	Honoring Indigenous Parenthood from Conception through Postpartum	Lindsey McGahey, IFSD, IBC, BE
May 17, 2022	Human Milk and Immunizations	Tameka Jackson-Dyer, BASc, IBCLC, CHW and Shonte' Terhune-Smith, BS, IBCLC, CLS, BD
June 21, 2022	Lactation and Grief after Perinatal, Neonatal, or Infant Loss	Anesha Stanley, CD, BD, PCD, CCE
July 26, 2022	Barriers in Birth: The Fight for Community Based Doulas and Black Birth Equity	Kiara Baskin, CD, CLC
August 16, 2022	Breastfeeding and Emergencies Working Group: Immunizations Guidance for Lactating Families	Shonte' Terhune-Smith, BS, IBCLC, CLS, BD
September 6, 2022	Human Lactation Behind Bars (<i>Limited Edition</i>)	Elon Geffrard, BS, CLC, ICCE, CD(DONA)
September 20, 2022	Navigating New Motherhood as a Birth/Breastfeeding Worker	Tameka White, CLS
October 18, 2022	Feed the Baby: Lactation, Contamination, and the American Formula Crisis	Tameka L. Jackson-Dyer, BASc, IBCLC, CHW
November 22, 2022	The Importance of Lactation Counseling through an Equity Lens	Lindsey McGahey, IFSD, IBC, BE
December 20, 2022	Birth Workers Serving Birth Workers: The Abundance of Self-love, Community, and Grace	Jennifer Day, IBCLC

"ONE OF MY FAVORITE THINGS ABOUT SERVING AS EDUCATION MANAGER HAS BEEN WORKING ALONGSIDE THE WEBINAR PRESENTERS. THE SERIES ENDEAVORS TO CENTER THE VOICES OF BLACK AND INDIGENOUS PRESENTERS WHO HAVE WORKED DILIGENTLY THROUGHOUT COVID-19 TO SUPPORT BREASTFEEDING IN THEIR COMMUNITIES AND EACH WEBINAR PROVIDES TOOLS FOR PARTICIPANTS TO DO THE SAME WITH THE FAMILIES THEY SERVE. IT IS A PRIVILEGE TO BE A PART OF THIS WORK, LISTENING AND LEARNING ALONG THE WAY."

VICKI WOOD, CLC, CLS, MIBFN FUND DEVELOPMENT
MANAGER, OUTGOING EDUCATION MANAGER AND LOCAL
BREASTFEEDING SUPPORTER IN MARQUETTE, MICHIGAN

THANK YOU WEBINAR FUNDING PARTNERS!

We are grateful to offer the Great Lakes Breastfeeding Webinars free of charge to participants with the generous support of funding partners.



MICHIGAN DEPARTMENT
OF HEALTH AND HUMAN
SERVICES BUREAU OF
HEALTH AND WELLNESS



OHIO DEPARTMENT
OF HEALTH



WISCONSIN
DEPARTMENT OF
HEALTH SERVICES



INDIANA
DEPARTMENT OF
PUBLIC HEALTH



TYLER RIGG
FOUNDATION



ILLINOIS
DEPARTMENT OF
PUBLIC HEALTH



CONNECTICUT
DEPARTMENT OF HEALTH
WIC PROGRAM AND
CONNECTICUT STATE
PHYSICAL ACTIVITY AND
NUTRITION PROGRAM



MINNESOTA
DEPARTMENT OF
HEALTH

NEW PARTNERSHIP WITH YOLO LACTATION AND DOULA SERVICES

We are so excited about our new partnership that launched in 2022 with YOLO Lactation and Doula Services to lead the Great Lakes Breastfeeding Webinars and expand our educational offerings to include weekly TrapChats and 45-hour clinical lactation support course.



YOLO has served birthing and breastfeeding families in the Flint community for nearly 10 years and is a key, go-to, and trusted partner throughout the healthcare systems in Flint and beyond. YOLO founder, Shonte' Terhune-Smith, BS, IBCLC, CLS, BD has a plethora of experience as an IBCLC, doula, educator, thought leader, and consultant on statewide and national programs.

TRAPCHAT

TrapChat is presented on the YOLO Facebook page via Facebook Live every Friday evening and is an authentic space for families and birthing parents to tune in, connect, and contribute, based on their own comfort level. YOLO develops the topics and then connects with panelists who meet the criteria of being relatable, honest, and equipped to talk about the subject matter through a lens of evidence and equity.



Topics are often an expansion of and deeper dive into recent Great Lakes Breastfeeding Webinars, ranging from fatherhood, doulas, miscarriage, COVID-19, formula shortage, and so on.



"THE PANDEMIC HAS TAUGHT US TO REIMAGINE HOW WE WORK, LEARN, AND ADVOCATE FOR FAMILIES. THE GREAT LAKES BREASTFEEDING WEBINARS HAVE BEEN AN ON-DEMAND AND EQUITY-CENTERED RESOURCE THAT HAVE HIGHLIGHTED THE WORK OF BLACK AND INDIGENOUS BIRTH AND BREASTFEEDING SUPPORTERS. OVER THE PAST THREE YEARS, WE HAVE LEARNED THAT THE LIVED EXPERIENCE OF A PRESENTER IS EQUALLY IMPORTANT AS THEIR PROFESSIONAL EXPERTISE, WHICH IS SHARED IN PRESENTATIONS ALONGSIDE EVIDENCE-BASED INFORMATION. IN ORDER TO GROW AS PROFESSIONALS, IT IS VITAL TO LISTEN TO COMMUNITIES TO IMPROVE BIRTH AND BREASTFEEDING OUTCOMES."

SHONTE' TERHUNE-SMITH, BS, IBCLC, CLS, BD, YOLO
LACTATION AND DOULA SERVICES FOUNDER AND LOCAL
BREASTFEEDING SUPPORTER IN FLINT, MICHIGAN

45-HOUR CLINICAL LACTATION SUPPORT COURSE

This educational offering is for community members, grassroots organizations, and breastfeeding supporters that are in search of growing professionally. The course is offered virtually and includes a designated certification. It is interactive, designed to enhance counseling and teaching skills through a lens of racial equity, and provides breastfeeding supporters with insight to authentically connect with families and other professionals.

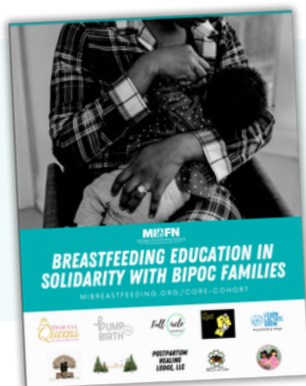
With this course, folx become certified as a **Community Breastfeeding Specialist**.

Topics this course covers:

- Communication
- Counseling
- Breastfeeding in Color (supporting BIPOC families)
- And more!



YOLO received 118 scholarship applications from Black and Indigenous folx for the course. This demonstrates that folx desire anti-racist breastfeeding education and that providing additional scholarships may alleviate the financial burden and make this education more widely accessible.



PUBLISHED BREASTFEEDING EDUCATION IN SOLIDARITY WITH BIPOC FAMILIES RESOURCES AND REPORT

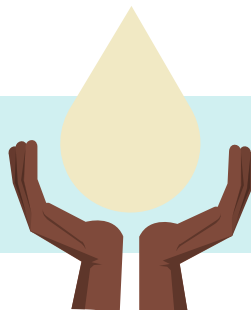
LEARN MORE ABOUT OUR EDUCATION EFFORTS AT [MIBREASTFEEDING.ORG/EDUCATION](https://mibreastfeeding.org/education).

COMMUNITY BUILDING

Our community building efforts in 2022 were grounded in relationship, sisterhood, and collaboration over competition. Our community partners gelled and worked collaboratively across Michigan, building community to further their efforts.



CONTINUATION OF THE MIBFN CORE COHORT



About the CORE Cohort:

The MIBFN Core Cohort is composed of **Black and Indigenous breastfeeding supporters and organizations who have chosen collaboration over competition**. They were initially awarded mini-grants in 2021 through MDHHS and Michigan Breastfeeding Network to advance their work, centering Black and Indigenous families in the reclamation and restoration of traditional birth and breast/bodyfeeding practices that have sustained families for centuries. Their work began focused in the areas of COVID-19, young mothers and fathers, and child care. They work collaboratively in sisterhood (not cis-terhood) to network, incubate, take action, and achieve outcomes in solidarity with the families in their communities.

"HAVING THE SPACE OF THE CORE COHORT BEING ABLE TO TALK WITH OTHER PEOPLE. IT ALLOWED ME TO GET TO KNOW OTHER PEOPLE. BIANCA SINCE THEN HAS COME TO PROVIDE BREASTFEEDING EDUCATOR TRAINING FOR OUR DOULAS HERE AT DAY ONE DOULA COLLECTIVE. THE MIBFN CORE COHORT WAS INSTRUMENTAL IN MAKING THAT CONNECTION."

KIARA BASKIN, CLC, CD, FOUNDER OF BUMP TO BIRTH
DOULA SERVICES AND LOCAL BREASTFEEDING SUPPORTER
IN GRAND RAPIDS, MICHIGAN

SOUTHEAST MICHIGAN IBCLCS OF COLOR (SEMI)

SEMI's efforts focused on centering the families they serve in the metro-Detroit area through lactation visits, human milk and immunizations education, connecting families with mental health support, human milk transport through Mama's Mobile Milk, and launching their new Community Milk Sharing Depot.



MILK LIKE MINE

Milk Like Mine grew their team and expanded their programming in 2022 to better support families meet their lactation goals. In addition to providing lactation visits, birth and postpartum doula services, classes, support groups, coalition meetings, and immunizations education, Milk Like Mine also started Leche Como La Mi`a and opened a Community Birthing & Breastfeeding Services Center.



YOLO LACTATION AND DOULA SERVICES

YOLO's partnership in MIBFN educational programming (Great Lakes Breastfeeding Webinars, TrapChat, and 45-hour course) is only one of the many things that they worked on in 2022. In addition, YOLO created their Birth and Breastfeeding Clinic, conducted lactation visits, and provided birth and postpartum doula support, childbirth and lactation education classes, and Milky Monday's Breastfeeding Support Group.



"IN REMOVING THE BARRIER OF FUNDING, THE NEED FOR CONTINUITY OF CARE IS ABSOLUTELY PROMINENT. THROUGH MY WORK, IT IS VERY CLEAR TO ME THAT FAMILIES WANT BIRTH AND BREASTFEEDING SUPPORT AND THAT THE BURDEN OF COMPENSATION MAKES IT DIFFICULT FOR FAMILIES TO PURSUE THE CARE THEY SEEK IN THE CHIPPEWA COUNTY AREA. I HOPE TO CONTINUE GROWING IN A NUMBER OF WAYS FROM PAID COMMUNITY EDUCATION (THROUGH AVENUES SUCH AS COURSES) TO A LARGER VIRTUAL FOLLOWING RESULTING IN COMPENSATION SO THAT I CAN CONTINUE TO DO THIS WORK WITH OR WITHOUT GRANTS IN A WAY THAT DOESN'T PLACE BURDEN ON FAMILIES, ESPECIALLY INDIGENOUS FAMILIES."

LINDSEY MCGAHEY, IBC, IFSD, BE, FOUNDER OF
PANORAMIC DOULA, CO-FOUNDER OF NOURISHING
NATIONS, BREASTFEEDING SUPPORTER IN SAULT STE.
MARIE, MICHIGAN

PANORAMIC DOULA

Panoramic Doula provided Indigenous family-centered care (lactation visits and full spectrum doula support) to families free of charge, educated other breastfeeding supporters through her Great Lakes Breastfeeding Webinars presentation, participated in a sexual assault/domestic violence training, and developed an Indigenous full spectrum self-paced educational online training.



NEXT GENERATION LACTATION SERVICES

In 2022, Next Generation Lactation Services received a mini-grant to support their breastfeeding clinic and supporting lactating families in Ingham County and surrounding areas with a priority focus on Black and Indigenous families.

SACRED WATERS

Sacred Waters served Indigenous communities throughout Michigan to provide a traditional support system, provided aspiring full spectrum doulas with support scholarships, provided training for the community through a traditional Indigenous lens, and also worked on their organizational infrastructure growth and development.



**SACRED
WATERS**



MI MILK COLLECTIVE

Mi Milk Collective worked on establishing policy recommendations and leadership team of Black leaders in breastfeeding and birth justice across Michigan, holding a Community Conversation with Black fathers on barriers and opportunities related to birth and breastfeeding justice, planning/promoting Black Breastfeeding Week celebrations, and connecting with legislators around advocacy issues.

**LEARN MORE ABOUT OUR COMMUNITY BUILDING EFFORTS AT
[MIBREASTFEEDING.ORG/COMMUNITY-BUILDING](https://mibreastfeeding.org/community-building).**

"THIS YEAR, COMMUNITY BUILDING ORGANIZATIONS FROM ACROSS MICHIGAN LEANED INTO THE NEED OF DEEP WORK TO MEET THE NEEDS OF FAMILIES IN THEIR COMMUNITIES, WHILE CENTERING THE MOST MARGINALIZED WITH REPRESENTATION AT THE CORE. BLACK AND INDIGENOUS-LED ORGANIZATIONS REMAINED GUIDED IN THE SISTERHOOD, LOVE AND CARE NEEDED TO SERVE ALONGSIDE ONE ANOTHER NO MATTER THE DISTANCE IN SPACE BETWEEN THEM. THE CONSTANT COMMUNICATION WITH THE MIBFN STAFF AND COMMUNITY PARTNERS, FELLOWSHIP, AUTHENTIC RELATIONSHIP, CARE AND ACCOUNTABILITY HAS BEEN A COMPLETE JOY TO EXPERIENCE. THIS TEAM AND LEADERS ARE SIMPLY SECOND TO NONE! I'M INSPIRED BY EACH OF THEM ON A DAILY BASIS."

JENNIFER DAY, IBCLC, MIBFN COMMUNITY BUILDING MANAGER, OWNER OF FEED THE BABES, LACTATION CONSULTANT, DOULA & CHILDBIRTH EDUCATOR, CO-FOUNDER OF SOUTHEAST MICHIGAN IBCLCS OF COLOR, CHAIR EMERITUS OF OAKLAND COUNTY BREASTFEEDING COALITION, AND BREASTFEEDING SUPPORTER IN FARMINGTON HILLS, MICHIGAN

OPERATIONAL INTEGRITY

MIBFN is committed as an organization to being good stewards of investments in our work, including keeping sound financial records, equitably compensating staff, and investing in clinically-skilled, community-rooted lactation support.

CLEAN **AUDIT SHOWING STRONG POLICIES,
PROCEDURES, AND PRACTICES**

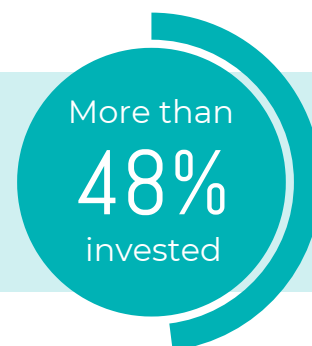


EQUITABLY COMPENSATED **STAFF**

In 2022:

- 2 staff celebrated 7 years with MIBFN
- 1 staff celebrated 5 years with MIBFN
- 2 staff celebrated 4 years with MIBFN

**SURPASSED OUR GOAL FOR INVESTMENT IN
CLINICALLY-SKILLED, **COMMUNITY-ROOTED**
LACTATION SUPPORT**



FINANCIALS

FINANCIALS

The World Health Organization (WHO) and various organizations recognize the importance of investing in human milk feeding as a vital approach to enhancing the health outcomes of lactating families. However, we face constant challenges in conveying the criticality of prioritizing breastfeeding to individuals and influential decision-makers who control funding. Our hope is to align our investments with our mission and vision, demonstrating our unwavering dedication to building a just, equitable, and breastfeeding-supportive culture.

TOTAL INCOME: \$1,215,804.89

TOTAL EXPENSES: \$1,114,369.17

MIBFN expenses included investment in advancing statewide efforts through policy advocacy, lactation education, community building programs, and organizational operations.

\$527,124.11

investment disbursed directly to local breastfeeding organizations and supporters to fund their efforts within their own communities

"THIS FUNDING IS SO IMPORTANT IN ENSURING THAT PRICE NOR PLACE ARE BARRIERS TO SKILLED LACTATION CARE AND SUPPORT. THANKS TO GRANT [FUNDING], WE ARE ABLE TO MEET FAMILIES WHERE THEY ARE, LITERALLY, BY TAKING US INTO THEIR HOMES AS WELL AS BRINGING THEM TOGETHER IN VIRTUAL SPACES. THESE FUNDS ALLOW US TO BE EQUITABLY COMPENSATED FOR THE CARE WE PROVIDE, WITHOUT PLACING THAT FINANCIAL BURDEN ON THE FAMILIES THAT NEED US THE MOST."

Tameka L. Jackson-Dyer, BASc, IBCLC, CHW, CLE, CLS, CLC, Owner, CrazyMilkLady Lactation Support Services, LLC; co-founder Southeast Michigan IBCLCs of Color; Chair Metro Detroit/ Wayne County Breastfeeding Coalition and Local Breastfeeding Supporter in Detroit, Michigan

WE ARE SO GRATEFUL TO MIBFN'S 2022 DONORS FOR YOUR INVESTMENT IN A JUST, EQUITABLE, AND BREASTFEEDING-SUPPORTIVE CULTURE.

Foundations:

- Binda Foundation
- Capital Area Community Foundation
- Foundation for Flint
- Michigan Health Endowment Fund
- Superior Health Foundation
- Tyler Rigg Foundation
- United Way for Southeastern Michigan
- United Way of Battle Creek and Kalamazoo Region
- WK Kellogg Foundation

Hospital Systems:

- Corewell Health

Health Departments:

- Connecticut Department of Public Health
- Illinois Department of Public Health
- Indiana Department of Public Health
- Michigan Department of Health and Human Services
- Michigan Health Endowment Fund
- Minnesota Department of Health
- Ohio Department of Public Health
- Wisconsin Department of Public Health

Individuals - Monthly Investors:

- Bonita A.
- Cierra P.
- Emily C.
- Jennifer D.
- Kaitlyn B.
- Lauren C.
- Lonias G.
- Raeanne M.
- Shannon M.-S.
- Susan M.

Individuals - one-time and supporters of GLBW:

- Abigail via Cory P.
- Aikaterini
- Ajoa A.
- Alyssa A.
- Amy S.
- April R.
- Arielle G.
- Arlene L.
- Barbara L M.
- Betsy M.
- Brittney K.
- Carolina S.
- Cassandra C.
- Catherine B.
- Clare M.
- Colette F.
- Cora V.
- Courtni J.
- Crystal C.
- Daneane M.
- Diane S.
- Edel R.
- Egle S.
- Elizabeth H.
- Emma D.
- Evelyn C.
- Falon R.
- Francesca O.
- Gabrielle S.
- Grace P.
- Gracieuse A.
- Hayley H.

Individuals - one-time and supporters of GLBW (ctd):

- Heidi M.
- Holly B.
- Inderjit A.
- Jasmine H.
- Jennifer B.
- Jennifer D.
- Jessica C.
- Joani A.
- Joann D.
- Joyce B.
- Judy F.
- Kara S.
- Katherine B.
- Kelly C.
- Lani D.
- LaRissa M.
- Latisha M.
- Linda M.
- Lyndsay C.
- Mary M.
- Mary S.
- Masaki N.
- Mechelle D.
- Melanie S.
- Mischa G.
- Nakeya S.
- Pam S.
- Pamela S.
- Rachel S.
- Reem S.
- Robin C.
- Sara W.
- Sarah L.
- Shonte' T.-S.
- Stacy C.
- Stephanie M.
- Sully R.
- Tamika W.
- Tara H.
- The Hughe House
- Tina S.
- Veronica M.

Donors in Memory of Stan Bien:

- Andrew B.
- Arlene C.
- Betsy C.
- Bill and Sandy B.
- Brian E.
- Diane R.
- Eileen F.
- Emily D.
- Gary and Marie C.
- Janet O.
- Jay T.
- Jerilyn M.
- Jill W.
- JoAnn S.
- Joyce B.
- Julie O.
- Kathie O.
- Kathleen S.
- Kathy K.
- Kelly L.
- Kevin L.
- Linda D.
- Maria L.
- Martha B.
- Mary Ann H.
- Mary R.
- Mike & Laurie
- Neeti T.
- Nicole D.
- Odie F.
- Philip B.
- Rosemary and Dorothy W. and Duncan
- Sharon L.
- Tony & Betty S.

THE

WORK

CONTINUES

LOOKING AHEAD

Looking forward to 2023, our work continues and our goals are big. Here's a sneak peak at what we have planned for this year:



Removing education barriers for IBCLC credentialing for Black and Indigenous birth workers by providing more free, accessible, relevant, evidence-based, and equity-focused offerings



Supporting our current community-building partners to expand and sustain their service models from within their own communities



Intensifying our focus on serving in solidarity with direct birth and human milk feeding support organizations led by Indigenous birth workers



Leveraging our experience as a geographic coalition to support local breastfeeding coalitions across Michigan with grounding their work in the movement for human milk feeding equity and justice



Advocating for breastfeeding-supportive legislation and financial support at both the federal and state levels



JOIN THE MOVEMENT

Breastfeeding benefits everyone.

Beyond the well-known benefits of human milk for both parents and children, breastfeeding is nourishment, medicine, and comfort. Unfortunately, our current systems, policies, and norms make it extremely difficult for families to achieve their breastfeeding goals. Breastfeeding benefits everyone, so we need everyone, from every walk of life and every community, to invest in this work of building breastfeeding-supportive systems throughout Michigan.

We are part of a movement toward a breastfeeding-supportive culture, and we are stronger together. We need YOU to join the movement. This mission and this movement matter, and your contribution will make a difference. Thank you!

INVEST AT [MIBREASTFEEDING.ORG/INVEST](https://mibreastfeeding.org/invest)