

MILK LIKE MINE

FACTS

- **Leadership:** Rickeshia Williams, CLS, CLC, MCD, CBE, Stephanie Freeman, CLC, BD, Anna Saup, MCD, MCPCD and Rosibel Kersjes, LMT, LE, BD, CA
- Website: milklikemine.com
- Facebook: Milk Like Mine
- Instagram: @milklikemine
- Twitter: @milklikemine
- Email: milklikemine@gmail.com
- Service Area: Calhoun County
- Primary population served: Black, Black-mixed, and biracial families

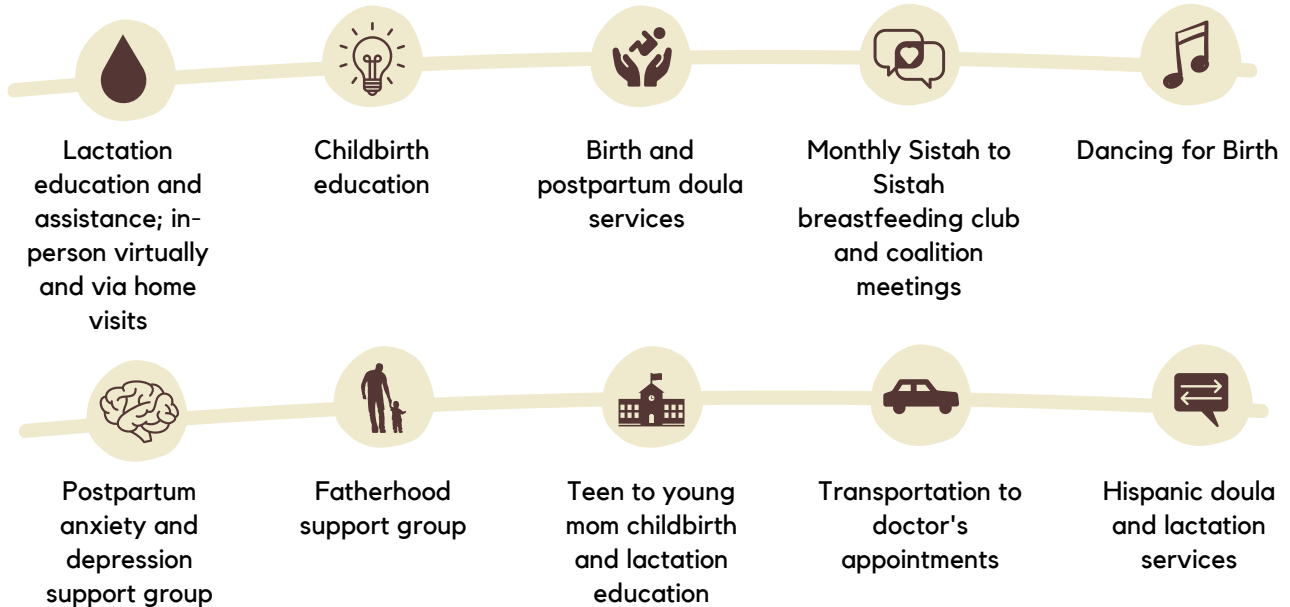
MISSION

We want all mothers and families to experience the impressive level of professionalism and get the help they need when they need it when working with Milk Like Mine. It is our hope that this will make birth and breastfeeding experiences safer and better supported through the services offered without financial barriers.

"WE STRIVE TO MAKE LIFE BE WHAT IT IS SUPPOSED TO BE. WE CAN'T CREATE A PERFECT WORLD, BUT WE STRIVE TO GET CLOSE TO IT, FOR OUR MOMS AND BABIES."

Rickeshia Williams, CLS, CLC, MCD, CBE

SERVICES



RECENT SUCCESSES

Established the **Community Birthing and Breastfeeding Services Center** to provide a space for folks in Battle Creek to seek skilled birthing and breastfeeding support, feel safe, and gather in community

Leveraged relationships and resources to connect dozens of Battle Creek families with **birth and breastfeeding support**

Partnered with Southeast Michigan IBCLCs of Color on **weekly breastfeeding and mental health support group** for families of color

Became **founding members of Mi Milk Collective**, a statewide organization of Black-led organizations working to amplify, center, and celebrate Black Breastfeeding and joined **breastfeeding task force at Bronson Battle Creek**



Expanded service offerings to include **Leche Como La Mia** (services in Spanish), **Young Educated Empowered Mamas** (support for young moms), **Moods Like Mine** (postpartum mental health support), **Dads Like Me** (support for dads)

Grew capacity to serve through current team members becoming certified as doulas, and adding more members to the doula team

Launched **Spilled Milk episodes on Facebook Live** for education, support and to give voice to the community

Organized and implemented **events during Black Breastfeeding Week and Breastfeeding Awareness Month**, including first annual Breastfeeding in the Park event

NEXT STEPS

